

SHERLOCK HOLMES

5th and 6th of Primary





BEFORE GOING TO THE THEATRE

THE STORY

Based on the detective novel by Sir Arthur Conan Doyle, *A Study in Scarlet* tells the story of the detective Sherlock Holmes and his assistant John Watson as they begin one of many murder mysteries in London.

In this story they find a ring and the word "rache" (German for revenge) written in blood on the wall at the murder scene. Will these clues help them resolve this double murder?

1. Discuss the following questions with the whole class:

- a) Do you know who Sherlock Holmes is?
- b) What qualities make Sherlock Holmes a good detective?
- c) Do you think Sherlock Holmes would be successful as a detective in the present day?
- d) Who is Enola Holmes?

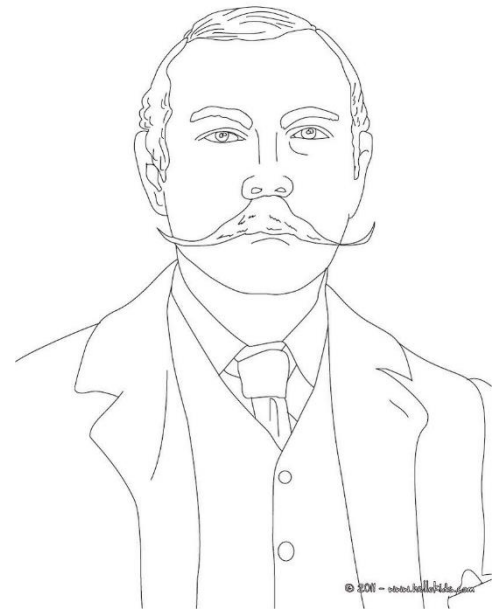
THE AUTHOR

2. Read the information about the author of *A Study in Scarlet* and complete the fact file below.

Sir Arthur Conan Doyle was born in Edinburgh, Scotland, in 1859. He is best known for being the creator of the detective, Sherlock Holmes and his assistant Dr Watson.

He enjoyed storytelling and hoped to be a writer one day however, when he left school he became a doctor.

Due to his father's early death, he was left to support his family and started writing to make extra money. His stories about Sherlock Holmes became very popular, and the detective has remained one of the world's best loved literary characters.



- a) **Date and place of birth:**
- b) **Famous for:**
- c) **First career:**
- d) **Writing career:**



THE CHARACTERS

3. Read the character descriptions.

Sherlock Holmes

Holmes is a detective who likes to learn about new things and uses science to resolve criminal cases.

John Watson

Watson is a military doctor who on his return to London becomes Holmes' roommate and companion.

Mrs Hudson

Mrs Hudson rents her house on Baker Street to Holmes and Watson. She is one of the few women that Sherlock Holmes trusts.

a) Now use the words to match the names with the relationship to Holmes.

Dr. Watson

Housekeeper

Sherlock Holmes

Best friend & housemate

Mrs Hudson

Detective

VOCABULARY

4. Label the detective below with the correct words:

cape **magnifying glass** **cap** **pipe** **clues** **notes**





5. Speaking.

In pairs, discuss why these images may be useful to a detective and what they might be used for.





6. Solve the clues

Play detective and use the key below to solve the words below:

Example - 17-11-22 **CAT**

a	b	c	d	e	f	g	h	i	j	k	l	m	n	o	p	q	r	s	t	u	v	w	x	y	z
11	5	17	24	19	16	8	26	25	12	1	3	2	23	21	7	10	14	4	22	6	15	18	13	9	20

- a) 11-14-22-26-6-14-17-21-23-11-23-24-21-9-3-19
- b) 7-14-25-15-11-22-19-24-19-22-19-17-22-25-15-19
- c) 24-21-17-22-21-14-18-11-22-4-21-23
- d) 4-17-21-22-3-11-23-24-9-11-14-24
- e) 3-21-23-24-21-23
- f) 24-19-24-6-17-22-25-21-23
- g) 5-11-1-19-14-4-22-14-19-19-22
- h) 19-15-25-24-19-23-17-19
- i) 4-26-19-14-3-21-17-1-26-21-3-2-19-4
- j) 3-21-8-25-17

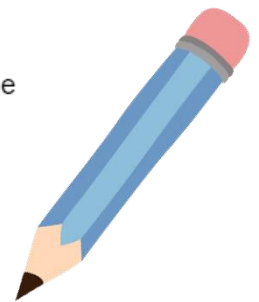
7. Crossword - Complete the crossword using the clues below.

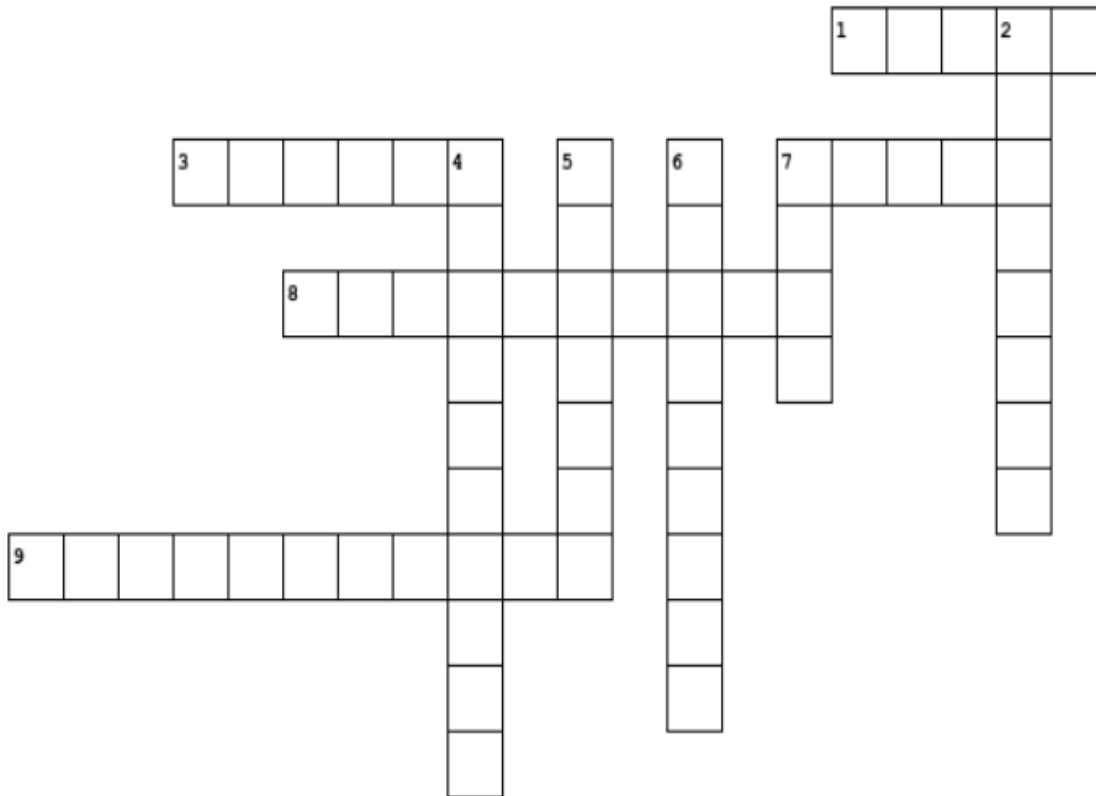
Across

- 1 Magnifying _____
- 3 Main setting of the story
- 7 German word meaning "revenge"
- 8 Sherlock's roommate (first and last name)
- 9 The street where Holmes & Watson live

Down

- 2 Well-known detective
- 4 This book was written in this century
- 5 A shade of the colour red from the title of the play
- 6 The name of housekeeper
- 7 The object that is found at the crime scene





8. Sherlock Holmes biography.

Fill in the blanks in the Sherlock Holmes biography. You will need to use the **past simple tense**.

This is the story about Sherlock Holmes, the most famous detective ever. He _____ (**be**) born on 6th of January 1854, during Queen Victoria's reign. He _____ (**not be**) raised in London, as most people believe. Instead, he _____ (**spend**) his childhood in the countryside with his parents and older brother Mycroft. When he _____ (**finish**) high school, he _____ (**study**) at London University and _____ (**become**) a consulting detective. He _____ (**not want**) to live in the countryside again, so he _____ (**move**) to London permanently. He lived in Baker Street. The stories about his deductions and investigations became legendary, and so _____ (**do**) he.

Sir Arthur Conan Doyle _____ (**write**) sixty Sherlock Holmes' stories. In his books, he always _____ (**describe**) how Sherlock _____ (**smoke**) a pipe, how he _____ (**play**) the violin and how much fun he _____ (**have**) doing chemical experiments in his flat. Sherlock _____ (**work**) with his loyal friend, Doctor Watson. Together, there _____ (**not be**) a mystery they couldn't solve.

However, the Sherlock Holmes' stories never really _____ (**happen**), they _____ (**be**) only fiction. So, we could say that the real hero _____ (**be**) Sir Arthur Conan Doyle.



9. True or False

Use the information in the biography to decide whether the following sentences are true or false.

- a) Holmes was born in June _____
- b) Sherlock Holmes has many friends _____
- c) Watson is very loyal _____
- d) He lives in Oxford Street _____
- e) Holmes likes to play the violin _____
- f) Watson smokes a pipe _____
- g) Sherlock Holmes stories are true stories _____
- h) He spent his childhood in the countryside _____

10. Idioms with colours

Idioms are a group of words that have a particular meaning that is different from the meanings of each word on its own. They are used very often in English and there are many related to colours. Can you match them to their definitions?

1. out of the blue	a. someone who <u>embarrasses</u> a <u>group</u> because they are different
2. give the green light	b. extremely hot
3. black sheep	c. a <u>lie</u> that is told in <u>order</u> to be <u>polite</u> or to <u>stop</u> someone from being <u>upset</u> by the <u>truth</u>
4. once in a blue moon	d. Not expected or planned
5. red- hot	e. not very often
6. white lie	f. Allow someone to do something



11. **Listening**

Listen to track 1 and 2 and answer the following questions:

- What is the name of the author who wrote *A study in Scarlet*?

.....

.....

- Where does the story take place?

.....

.....

- What do the girls find in the attic?

.....

.....

- What surprises Watson about Sherlock Holmes when they first meet?

.....

.....

- What does Holmes say is the key to solving problems?

.....

.....



AFTER GOING TO THE THEATRE

12. Hello again! Did you enjoy the show? Let's see if you remember the story:

a) How many characters appear in the play? How many actors play them?

.....

.....

b) How are they dressed?

.....

.....

.....

.....

c) What do you think is the funniest scene?

.....

.....

.....

.....

.....

.....





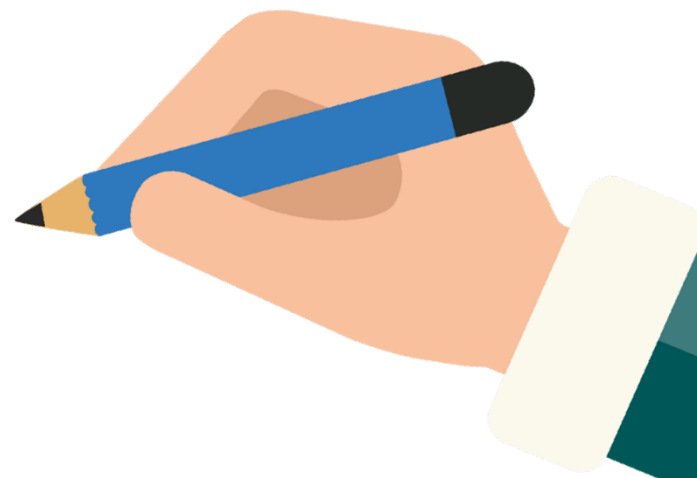
13. **True or false.** Look at the sentences below and say if they are true or false.

- The story takes place in London.
- Mrs Hudson is Sherlock Holmes' wife.
- At the scene of the murder a necklace is found.
- The word on the wall "Rache" means revenge in German.
- A telegram is sent to Sherlock from Scotland Yard to help with the investigation.
- John Watson is a detective.



14. Writing

Imagine you are Scotland Yard police at the beginning of the story. Write an email to Sherlock Holmes asking him to help you with your investigations on this murder case. You should explain in as much detail the murder scene from the play. Remember to use the format of an email. Write about 100 words (3 short paragraphs).





15. Wordsearch.

Words can be found in any direction (including diagonals) and can overlap each other. Use the word bank below.

Y D S D N X S T E L E G R A M Y Q H N Q
C A Q H C M D N A L T O C S J G I A O C
L E J O U O O B K M P O L I C E O A A D
U B J D D G O Z L E X Z T J G D B F J X
E P U K P G J N U E G B E G A I C E J T
P V S Z U M P D D S P C L B L O O D S Y
Q Y R E T S Y M F A H F R K M M Q T F X
X D F D U F B K Q C Q S A W C J R K G W
B Y R W O C A P K N O T C S U E H A V N
J A A E G X Z X M V Q N S H E Q N U G D
Y V P B D N O D N O L I B T F N Y D O B
X I D V E G B T S U M R O G R L I V U X
P P G F T N A Z V F G P O U A F N V J Y
D Z T O E O K Q L K Z R J H X R P R U I
E Y O Y C S E W N P G E R I N G E P S Q
L U U V T I R R J O P G U H U D J W B G
N L I R I O W L Y Q H N U S R N W Y S E
N B R S V P M R U A O I O U N S D Q Z E
J U S L E Q O F O A D F M W H W L X K N
G G C C Q F O O T P R I N T S S B S N K

Word Bank

- | | | | |
|---------------|----------------|------------------|-------------|
| 1. police | 2. scarlet | 3. ring | 4. scotland |
| 5. baker | 6. case | 7. cap | 8. yard |
| 9. blood | 10. footprints | 11. poison | 12. street |
| 13. murder | 14. london | 15. pipe | 16. clue |
| 17. body | 18. telegram | 19. fingerprints | 20. mystery |
| 21. detective | | | |



transeduca

www.transeduca.com

info@transeduca.com

911 138 140 / 934 740 002